



Hoses, Tubes and Fittings

HOSES

2 STARK - Exceeds SAE 100 R16 - EN 857 2 SC

Extremely high pressure compact hose



Item no.	Hose I.D				Hose O.D		Working pressure	Burst pressure	Minimum bend radius	Weight
	DN	size	mm	inch	mm	inch				
2STK-06-04	06	-4	6,4	1/4"	13,1	0,52	450	1800	45	0,30
2STK-10-06	10	-6	9,5	3/8"	16,5	0,65	390	1560	70	0,38
2STK-12-08	12	-8	12,7	1/2"	20,1	0,79	350	1400	90	0,55
2STK-19-12	19	-12	19,0	3/4"	27,5	1,08	280	1120	160	0,80

Applications:

Extremely high pressure compact hose with greater flexibility. Recommended for hydraulic applications where a high pressure and a tighter bend radius is needed. Approved at 1.000.000 impulse cycles at 1,33% WP. Suitable for passage of mineral and vegetable oils, water-based solutions, water air and inert gases.

Construction:

Tube: Black synthetic rubber resistant to oils.
Reinforcement: Two high tensile steel braids.
Cover: Black, synthetic rubber resistant to oils, abrasion and weather condition.

Compatible with our standard flange and ferrules (4200)

Temperature:

-40°C to 100°C
 (125°C discontinuous)
 -40°F to 212°F
 (257°F discontinuous)

Hydraulic hoses TrAle - EN 853 2SN / SAE 100 R2AT Hose

Composition:

Inner tube: Special synthetic rubber resistant to hydraulic oil.
 Reinforcement: two braids of steel wire.
 Cover: synthetic rubber resistant to oil, abrasion and weather.



Working temperature: From -40° C to +100° C. Compatible with our standard flange and ferrules (4200)

Item no.	DN	Ø in	Ø out	Working pressure (bar)	Working pressure (psi)	Burst pressure (bar)	Burst pressure (psi)	Vacuum (bar)	Bending radius (mm)	Weight (kg/m)
MS351116	1"	25,3	36,7	165	2392,5	650	9425	-0,8	300	1,35
MS351120	1 1/4"	32,2	46,5	125	1812,5	500	7250	-0,8	420	2,15
MS351124	1 1/2"	38,2	52,8	90	1305	360	5220	-0,8	500	2,65
MS351132	2"	51	68,6	80	1160	320	4640	-0,8	630	3,42

Hydraulic hoses TrAle - EN 856 4SH Hose - BW series, no skiving

TrAle - Four layer hoses

Composition:

Inner tube: Special synthetic rubber resistant to mineral, vegetable and hydraulic oil.
 Reinforcement: four braids of steel wire.
 Cover: synthetic rubber resistant to oil, abrasion and weather.



Working temperature: From -40° C to +100° C.

Compatible with our BW flange and BW ferrules

Item no.	DN	Ø in	Ø out	Working pressure (bar)	Working pressure (psi)	Burst pressure (bar)	Burst pressure (psi)	Bending radius (mm)	Weight (kg/m)
MS456912	3/4"	19	31,5	420	6090	1680	24360	280	1,7
MS456916	1"	25,2	38,5	380	5510	1520	22040	340	2,5
MS456920	1 1/4"	32,2	45,2	325	4712,5	1300	18850	460	3

TAON

Hydraulik Komponenter

TAON Hydraulic Components ApS are specialists in hydraulic solutions, components and tool.

TAON Hydraulic Components ApS • +45 24 48 84 80 • info@taon.dk • www.taon.dk

© TAON Hydraulic will always help you find the best solution.

Hydraulic hoses TrAle - SAE 100 R4 Hose

Suction/return hose

Composition:

Inner tube: Special NBR rubber resistant to hydraulic oil.

Reinforcement: two textile braids with one steel wire helix.

Cover: Black rubber resistant to oil, abrasion and weather.



Working temperature: From -40° C to +100° C.

Item no.	DN	Ø in	Ø out	Working pressure (bar)	Working pressure (psi)	Burst pressure (bar)	Burst pressure (psi)	Vacuum (bar)	Bending radius (mm)	Weight (kg/m)
ML701019	3/4"	19	32	21	305	84	1218	-0,8	127	0,725
ML701025	1"	25,4	37,4	17	247	68	986	-0,8	152	0,847
ML701032	1 1/4"	31,8	45	14	203	56	812	-0,8	203	1,118
ML701038	1 1/2"	38,1	52	10	145	40	580	-0,8	254	1,454
ML701050	2"	50,8	64	7	102	28	406	-0,8	305	1,837
ML701063	2 1/2"	63,5	77	4	58	16	232	-0,8	356	2,310

Compatible with our BSP flange - standard series

TAON

Hydraulik Komponenter

TAON Hydraulic Components ApS are specialists in hydraulic solutions, components and tool.

TAON Hydraulic Components ApS • +45 24 48 84 80 • info@taon.dk • www.taon.dk

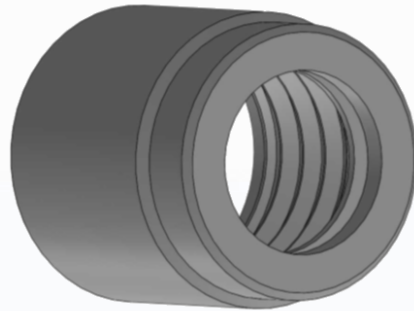
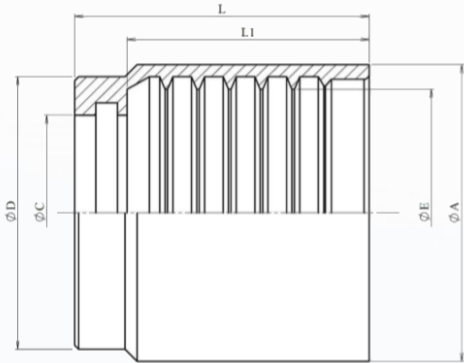
© TAON Hydraulic will always help you find the best solution.

Ferrules

Crimping Ferrules

Ferrules 4200 (2SN/2SC) Standard

Mild Steel 1.0737 (EN 10.277-3)



Item no.	DN	L	L1	ØA	ØC	ØD	ØE
4200-11-04	1/4"	29,5	23,9	23	11,7	22	15,7
4200-11-06	3/8"	31	25	26	14,9	25	19,7
4200-11-08	1/2"	32	25,5	29	18,8	28	23,6
4200-11-12	3/4"	41	32,7	37	24,6	35,5	30,1
4200-11-16	1"	51,2	42,7	46	31	43,3	39
4200-11-20	1 1/4"	58,5	48,1	59	38,9	55	49,2
4200-11-24	1 1/2"	61,5	50,9	67	44,1	62,4	56
4200-11-32	2"	74,5	64,1	80	58	76	68,7

BSP Flange - Standard

Flange 60°

Thread	Hose Ø	Male	OML	OML (45°)	OML (90°)
1/4"	1/4"	4202-04-04	4201-04-04	4204-04-04	4203-04-04
1/4"	3/8"	4202-04-06	4201-04-06	-	-
3/8"	1/4"	4202-06-04	4201-06-04	4204-06-04	4203-06-04
3/8"	3/8"	4202-06-06	4201-06-06	4204-06-06	4203-06-06
3/8"	1/2"	4202-06-08	4201-06-08	-	-
1/2"	1/4"	4202-08-04	4201-08-04	-	4203-08-04
1/2"	3/8"	4202-08-06	4201-08-06	4204-08-06	4203-08-06
1/2"	1/2"	4202-08-08	4201-08-08	4204-08-08	4203-08-08
3/4"	1/2"	4202-12-08	4201-12-08	-	4203-12-08
3/4"	3/4"	4202-12-12	4201-12-12	4204-12-12	4203-12-12
1"	3/4"	4202-16-12	4201-16-12	4204-16-12	4203-16-12
1"	1"	4202-16-16	4201-16-16	4204-16-16	4203-16-16
1 1/4"	1 1/4"	4202-20-20	4201-20-20	4204-20-20	4203-20-20
1 1/2"	1 1/2"	4202-24-24	4201-24-24	4204-24-24	4203-24-24
2"	2"	4202-32-32	4201-32-32	4204-32-32	4203-32-32

TAON

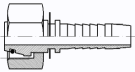
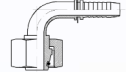
Hydraulik Komponenter

TAON Hydraulic Components ApS are specialists in hydraulic solutions, components and tool.

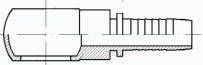
TAON Hydraulic Components ApS • +45 24 48 84 80 • info@taon.dk • www.taon.dk

© TAON Hydraulic will always help you find the best solution.

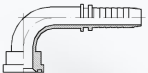
Flange 24°

L-Serie Metric				
Pipe	Thread	Hose Ø	OML	OML (90°)
10	16x1,5	1/4"	4270-10-04	4271-10-04
12	18x1,5	1/4"	4270-12-04	-
10	16x1,5	3/8"	4270-10-06	4271-10-06
12	18x1,5	3/8"	4270-12-06	4271-12-06
15	22x1,5	3/8"	4270-15-06	4271-15-06
15	22x1,5	1/2"	4270-15-08	4271-15-08
18	26x1,5	1/2"	4270-18-08	-
22	30x2	3/4"	4270-22-12	4271-22-12
28	36x2	1"	4270-28-16	4271-28-16
35	45x2	1 1/4"	4270-35-20	4271-35-20
42	52x2	1 1/2"	4270-42-24	4271-42-24

Banjo

		
Ø bolt	Hose Ø	Item no.
1/4"	1/4"	4280-04-04
1/4"	3/8"	4280-04-06
3/8"	1/4"	4280-06-04
3/8"	3/8"	4280-06-06
3/8"	1/2"	4280-06-08
1/2"	3/8"	4280-08-06
1/2"	1/2"	4280-08-08
3/4"	3/4"	4280-12-12
1"	1"	4280-16-16

Flange SAE 6000

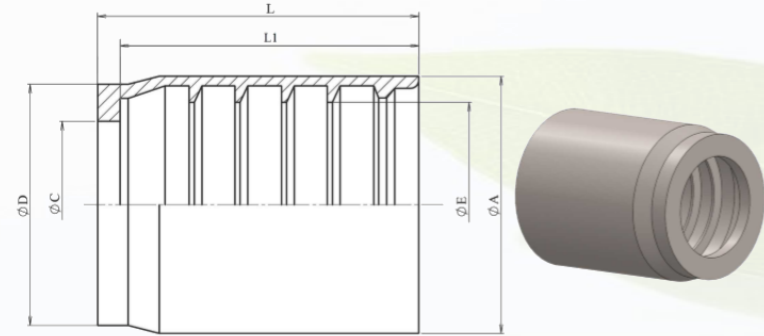
 90°		
Flange Ø	Hose Ø	Item no.
Ø31.8	1/2"	4254-08-08
Ø41.3	1/2"	4254-12-08
Ø41.3	3/4"	4254-12-12
Ø47.6	3/4"	4254-16-12

BW Ferrules

BW fitting - no skiving

Ferrules 4200-20 (4SH)




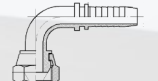
Mild Steel 1.0737 (EN 10.277-3)



Item no.	DN	L	L1	ØA	ØC	ØD	ØE
4200-20-12	3/4"	50	44,5	42	25,2	36,3	33
4200-20-16	1"	56	50,7	50	31	45	41
4200-20-20	1 1/4"	67	60,5	64	38,9	58	53

BW Flange

Flange 60°

BSP					
Thread	Hose Ø	Male	OML Female	OML (45°) Female	OML (90°) Female
3/4"	3/4"	661121212	661101212	661181212	661171212
1"	1"	661121616	661101616	661181616	661171616
1 1/4"	1 1/4"	661122020	661102020	661182020	661172020

TAON

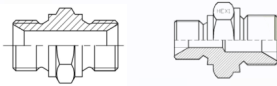
Hydraulik Komponenter

TAON Hydraulic Components ApS are specialists in hydraulic solutions, components and tool.

TAON Hydraulic Components ApS • +45 24 48 84 80 • info@taon.dk • www.taon.dk

© TAON Hydraulic will always help you find the best solution.

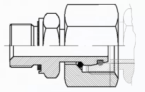
BSP Fitting



Hex nipple - straight/reduction

Thread (BSP)	Thread (BSP)	BSP 60° / BSP 60°
1/4"	1/4"	7002-04-04
1/4"	3/8"	7002-04-06
1/4"	1/2"	7002-04-08
1/4"	3/4"	7002-04-12
3/8"	3/8"	7002-06-06
3/8"	1/2"	7002-06-08
3/8"	3/4"	7002-06-12
1/2"	1/2"	7002-08-08
1/2"	3/4"	7002-08-12
1/2"	1"	7002-08-16
3/4"	3/4"	7002-12-12
3/4"	1"	7002-12-16
3/4"	1 1/4"	7002-12-20
1"	1"	7002-16-16
1"	1 1/4"	7002-16-20
1"	1 1/2"	7002-16-24
1 1/4"	1 1/4"	7002-20-20
1 1/4"	1 1/2"	7002-20-24
1 1/4"	2"	7002-20-32
1 1/2"	1 1/2"	7002-24-24
1 1/2"	2"	7002-24-32
2"	2"	7002-32-32

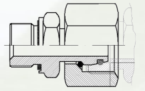
Straight stud standpipe - BSP (pipe/BSP)



L-series

Item no.	Pipe	Thread (BSP)
6090-08-04	8mm	1/4" BSP
6090-10-04	10mm	1/4" BSP
6090-12-06	12mm	3/8" BSP
6090-15-08	15mm	1/2" BSP
6090-18-08	18mm	1/2" BSP
6090-22-12	22mm	3/4" BSP
6090-28-16	28mm	1" BSP
6090-35-20	35mm	1 1/4" BSP
6090-42-24	42mm	1 1/2" BSP

S-series



Item no.	Pipe	Thread (BSP)
6590-06-04	6mm	1/4" BSP
6590-08-04	8mm	1/4" BSP
6590-10-06	10mm	3/8" BSP
6590-12-06	12mm	3/8" BSP
6590-14-08	14mm	1/2" BSP
6590-16-08	16mm	1/2" BSP
6590-20-12	20mm	3/4" BSP
6590-25-16	25mm	1" BSP
6590-30-20	30mm	1 1/4" BSP
6590-38-24	38mm	1 1/2" BSP

Adaptor BSP male-BSP swivel female (60°)



Item no.	Thread (BSP)	Thread (BSP)
7008-04-04	1/4" BSP	1/4" BSP
7008-06-06	3/8" BSP	3/8" BSP
7008-08-08	1/2" BSP	1/2" BSP
7008-12-12	3/4" BSP	3/4" BSP
7008-16-16	1" BSP	1" BSP
7008-20-20	1 1/4" BSP	1 1/4" BSP
7008-24-24	1 1/2" BSP	1 1/2" BSP
7008-32-32	2" BSP	2" BSP

Adaptor BSP swivel female-BSP swivel female (60°)



Item no.	Thread (BSP)	Thread (BSP)
7007-04-04	1/4" BSP	1/4" BSP
7007-06-06	3/8" BSP	3/8" BSP
7007-08-08	1/2" BSP	1/2" BSP
7007-12-12	3/4" BSP	3/4" BSP
7007-16-16	1" BSP	1" BSP
7007-20-20	1 1/4" BSP	1 1/4" BSP
7007-24-24	1 1/2" BSP	1 1/2" BSP
7004-32-32	2" BSP	2" BSP

Reducer Adaptor BSP male-BSP swivel female (60°)



Item no.	Thread (BSP) Male	Thread (BSP) Female
7008-04-06	1/4" BSP	3/8" BSP
7008-06-04	3/8" BSP	1/4" BSP
7008-08-06	1/2" BSP	3/8" BSP
7008-12-08	3/4" BSP	1/2" BSP
7008-16-12	1" BSP	3/4" BSP
7008-06-08	3/8" BSP	1/2" BSP
7008-08-12	1/2" BSP	3/4" BSP
7008-12-16	3/4" BSP	1" BSP
7008-12-20	3/4" BSP	1 1/4" BSP
7008-16-20	1" BSP	1 1/4" BSP
7008-20-24	1 1/4" BSP	1 1/2" BSP
7008-24-32	1 1/2" BSP	2" BSP

TAON

Hydraulik Komponenter

TAON Hydraulic Components ApS are specialists in hydraulic solutions, components and tool.

TAON Hydraulic Components ApS • +45 24 48 84 80 • info@taon.dk • www.taon.dk

© TAON Hydraulic will always help you find the best solution.



BSP 90° Elbow (swivel female-male)

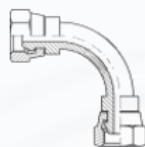
Item no.	Thread (BSP)	Thread (BSP)
7205-0404	1/4" BSP	1/4" BSP
7205-06-06	3/8" BSP	3/8" BSP
7205-08-08	1/2" BSP	1/2" BSP
7205-12-12	3/4" BSP	3/4" BSP
7205-16-16	1" BSP	1" BSP
7205-20-20	1 1/4" BSP	1 1/4" BSP
7205-24-24	1 1/2" BSP	1 1/2" BSP
7205-32-32	2" BSP	2" BSP



BSP 45° Elbow (swivel female-male)

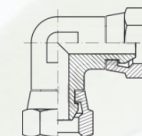
Item no.	Thread (BSP)	Thread (BSP)
7305-04-04	1/4" BSP	1/4" BSP
7305-06-06	3/8" BSP	3/8" BSP
7305-08-08	1/2" BSP	1/2" BSP
7305-12-12	3/4" BSP	3/4" BSP
7305-16-16	1" BSP	1" BSP
7305-20-20	1 1/4" BSP	1 1/4" BSP
7305-24-24	1 1/2" BSP	1 1/2" BSP
7305-32-32	2" BSP	2" BSP

BSP 90° Elbow (swivel female-swivel female)



Item no.	Thread (BSP) Male	Thread (BSP) Female
7206-0404	1/4" BSP	1/4" BSP
7206-06-06	3/8" BSP	3/8" BSP
7206-08-08	1/2" BSP	1/2" BSP
7206-12-12	3/4" BSP	3/4" BSP
7206-16-16	1" BSP	1" BSP
7206-20-20	1 1/4" BSP	1 1/4" BSP
7206-24-24	1 1/2" BSP	1 1/2" BSP
7206-32-32	2" BSP	2" BSP

BSP 90° Elbow (swivel female-swivel female) forge



Item no.	Thread (BSP)	Thread (BSP)
7902-04-04	1/4" BSP	1/4" BSP
7902-06-06	3/8" BSP	3/8" BSP
7902-08-08	1/2" BSP	1/2" BSP
7902-12-12	3/4" BSP	3/4" BSP
7902-16-16	1" BSP	1" BSP
7902-20-20	1 1/4" BSP	1 1/4" BSP
7902-24-24	1 1/2" BSP	1 1/2" BSP

TAON

Hydraulik Komponenter

TAON Hydraulic Components ApS are specialists in hydraulic solutions, components and tool.

TAON Hydraulic Components ApS • +45 24 48 84 80 • info@taon.dk • www.taon.dk

© TAON Hydraulic will always help you find the best solution.

BSP 45° Elbow (male-swivel female) forge



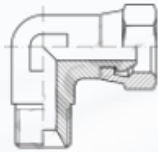
Item no.	Thread (BSP)	Thread (BSP)
7303-04-04	1/4" BSP	1/4" BSP
7303-06-06	3/8" BSP	3/8" BSP
7303-08-08	1/2" BSP	1/2" BSP
7303-12-12	3/4" BSP	3/4" BSP
7303-16-16	1" BSP	1" BSP
7303-20-20	1 1/4" BSP	1 1/4" BSP

BSP 90° Elbow (male-male) adjustable forge



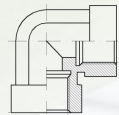
Item no.	Thread (BSP)	Thread (BSP)
7204-04-04	1/4" BSP	1/4" BSP
7204-06-04	3/8" BSP	1/4" BSP
7204-06-06	3/8" BSP	3/8" BSP
7204-08-12	1/2" BSP	3/8" BSP
7204-08-06	1/2" BSP	1/2" BSP
7204-12-08	3/4" BSP	1/2" BSP
7204-12-12	3/4" BSP	3/4" BSP
7204-16-12	1" BSP	3/4" BSP
7204-16-16	1" BSP	1" BSP
7204-20-20	1 1/4" BSP	1 1/4" BSP
7204-24-24	1 1/2" BSP	1 1/2" BSP
7204-32-32	2" BSP	2" BSP

BSP 90° Elbow (male-swivel female) forge



Item no.	Thread (BSP) Male	Thread (BSP) Female
7203-04-04	1/4" BSP	1/4" BSP
7203-06-06	3/8" BSP	3/8" BSP
7203-08-08	1/2" BSP	1/2" BSP
7203-12-12	3/4" BSP	3/4" BSP
7203-16-16	1" BSP	1" BSP
7203-20-20	1 1/4" BSP	1 1/4" BSP
7203-24-24	1 1/2" BSP	1 1/2" BSP
7203-32-32	2" BSP	2" BSP

BSP 90° Elbow (fixed female-fixed male) forge



Item no.	Thread (BSP)	Thread (BSP)
7904-04-04	1/4" BSP	1/4" BSP
7904-06-06	3/8" BSP	3/8" BSP
7904-08-08	1/2" BSP	1/2" BSP
7904-12-12	3/4" BSP	3/4" BSP
7904-16-16	1" BSP	1" BSP
7904-20-20	1 1/4" BSP	1 1/4" BSP
7904-24-24	1 1/2" BSP	1 1/2" BSP
7904-32-32	2" BSP	2" BSP

TAON

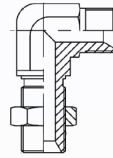
Hydraulik Komponenter

TAON Hydraulic Components ApS are specialists in hydraulic solutions, components and tool.

TAON Hydraulic Components ApS • +45 24 48 84 80 • info@taon.dk • www.taon.dk

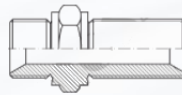
© TAON Hydraulic will always help you find the best solution.

BSP 90° Elbow bulkhead adaptor male-male (60°)



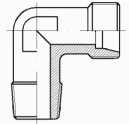
Item no.	Thread (BSP)	Thread (BSP)
7905-04-04	1/4" BSP	1/4" BSP
7905-06-06	3/8" BSP	3/8" BSP
7905-08-08	1/2" BSP	1/2" BSP
7905-12-12	3/4" BSP	3/4" BSP

BSP Straight bulkhead adaptor without nuts (60°)



Item no.	Thread (BSP)	Thread (BSP)
7090-04-04	1/4" BSP	1/4" BSP
7090-06-06	3/8" BSP	3/8" BSP
7090-08-08	1/2" BSP	1/2" BSP
7090-12-12	3/4" BSP	3/4" BSP
7090-16-16	1" BSP	1" BSP
7090-20-20	1 1/4" BSP	1 1/4" BSP
7090-24-24	1 1/2" BSP	1 1/2" BSP

BSPT Male stud elbows BSP tapered



Item no.	Pipe	Thread (BSPT)
6011-06-05	6	1/4" BSPT
6011-08-05	8	1/4" BSPT
6011-08-07	8	3/8" BSPT
6011-10-05	10	1/4" BSPT
6011-10-07	10	3/8" BSPT
6011-10-09	10	1/2" BSPT
6011-12-05	12	1/4" BSPT
6011-12-07	12	3/8" BSPT
6011-12-09	12	1/2" BSPT
6011-15-07	15	3/8" BSPT
6011-15-09	15	1/2" BSPT
6011-18-09	18	1/2" BSPT
6011-22-13	22	3/4" BSPT
6011-28-17	28	1" BSPT
6011-35-21	35	1 1/4" BSPT
6011-42-25	42	1 1/2" BSPT

TAON

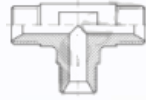
Hydraulik Komponenter

TAON Hydraulic Components ApS are specialists in hydraulic solutions, components and tool.

TAON Hydraulic Components ApS • +45 24 48 84 80 • info@taon.dk • www.taon.dk

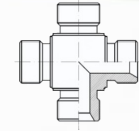
© TAON Hydraulic will always help you find the best solution.

Tee BSP male 60° sealing cone



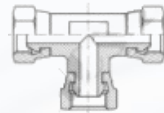
Item no.	Thread (BSP)	Thread (BSP)	Thread (BSP)
7401-04-04	1/4" BSP	1/4" BSP	1/4" BSP
7401-06-06	3/8" BSP	3/8" BSP	3/8" BSP
7401-08-08	1/2" BSP	1/2" BSP	1/2" BSP
7401-12-12	3/4" BSP	3/4" BSP	3/4" BSP
7401-16-16	1" BSP	1" BSP	1" BSP
7401-20-20	1 1/4" BSP	1 1/4" BSP	1 1/4" BSP
7401-24-24	1 1/2" BSP	1 1/2" BSP	1 1/2" BSP
7401-32-32	2" BSP	2" BSP	2" BSP

Cross BSP male (square) 60°



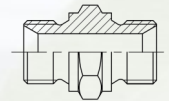
Item no.	Thread (BSP)
7901-04-04	1/4" BSP
7901-06-06	3/8" BSP
7901-08-08	1/2" BSP
7901-12-12	3/4" BSP
7901-16-16	1" BSP

Tee BSP swivel female 60° sealing cone



Item no.	Thread (BSP)	Thread (BSP)	Thread (BSP)
7402-04-04	1/4" BSP	1/4" BSP	1/4" BSP
7402-06-06	3/8" BSP	3/8" BSP	3/8" BSP
7402-08-08	1/2" BSP	1/2" BSP	1/2" BSP
7402-12-12	3/4" BSP	3/4" BSP	3/4" BSP
7402-16-16	1" BSP	1" BSP	1" BSP
7402-20-20	1 1/4" BSP	1 1/4" BSP	1 1/4" BSP
7402-24-24	1 1/2" BSP	1 1/2" BSP	1 1/2" BSP
7402-32-32	2" BSP	2" BSP	2" BSP

Hex nipple - BSP, Metric



Thread	Thread	BSP 60° / BSP 60° - Item no
1/4"	M14x1.5	7019-04-14
3/8"	M14x1.5	7019-06-14
3/8"	M16x1.5	7019-06-16
3/8"	M18x1.5	7019-06-18
1/2"	M18x1.5	7019-08-18
1/2"	M20x1.5	7019-08-20
1/2"	M22x1.5	7019-08-22
1/2"	M26x1.5	7019-08-26
3/4"	M22x1.5	7019-12-22

TAON

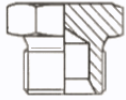
Hydraulik Komponenter


TAON Hydraulic Components ApS are specialists in hydraulic solutions, components and tool.

TAON Hydraulic Components ApS • +45 24 48 84 80 • info@taon.dk • www.taon.dk

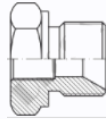
© TAON Hydraulic will always help you find the best solution.


Plug hexagonal



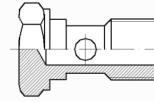
Thread	Item no.
1/4"	7501-00-04
3/8"	7501-00-06
1/2"	7501-00-08
3/4"	7501-00-12
1"	7501-00-16
	


Reduction Plug hexagonal BSP/BSP



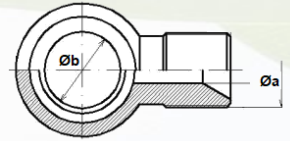
Male thread	Female thread	Item no.
3/8"	1/4"	7017-06-04
1/2"	1/4"	7017-08-04
1/2"	3/8"	7017-08-06
3/4"	3/8"	7017-12-06
3/4"	1/2"	7017-12-08
		


Bolt for banjo



Thread (BSP)	Item no.
1/4" BSP	4280-01-04
3/8" BSP	4280-01-06
1/2" BSP	4280-01-08
3/4" BSP	4280-01-12
1" BSP	4280-01-16
	

Banjo with thread



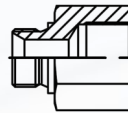
Øa (BSP)	Øb	Item no.
1/4" BSP	1/4"	7081-04-04
3/8" BSP	3/8"	7081-06-06
1/2" BSP	1/2"	7081-08-08
3/4" BSP	3/4"	7081-12-12
		


Reduction



Male thread	Female thread	Item no.
1/4"	3/8"	7005-04-06
1/4"	1/2"	7005-04-08
3/8"	1/4"	7005-06-04
3/8"	1/2"	7005-06-08
3/8"	3/4"	7005-08-12
1/2"	1/4"	7005-08-04
1/2"	3/8"	7005-008-06
1/2"	3/4"	7005-08-12
1/2"	1"	7005-08-16
3/4"	3/8"	7005-12-06
3/4"	1/2"	7005-12-08
3/4"	1"	7005-12-16
		

Adaptor



Thread	Female/ Female Item no.	Male/ Female Item no.
1/4"	7011-04-04	7005-04-04
3/8"	7011-06-06	7005-06-06
1/2"	7011-08-08	7005-08-08
3/4"	7011-12-12	7005-12-12
1"	7011-16-16	7005-16-16
		

TAON

Hydraulik Komponenter

TAON Hydraulic Components ApS are specialists in hydraulic solutions, components and tool.

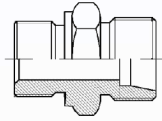
TAON Hydraulic Components ApS • +45 24 48 84 80 • info@taon.dk • www.taon.dk

© TAON Hydraulic will always help you find the best solution.

Pipe fittings

Straight male stud coupling BSP cyl. 60°

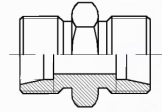
L-Series



Pipe	Thread	Item no.
6	1/4"	6003-06-05
8	1/4"	6003-08-05
8	3/8"	6003-08-07
10	1/4"	6003-10-05
10	3/8"	6003-10-07
10	1/2"	6003-10-09
12	1/4"	6003-12-05
12	3/8"	6003-12-07
12	1/2"	6003-12-09
15	3/8"	6003-15-07
15	1/2"	6003-15-09
18	1/2"	6003-18-09
22	3/4"	6003-22-13
28	1"	6003-28-17

Straight coupling (pipe-pipe)

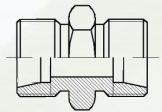
L-Series



Pipe	Item no.
6	6041-00-06
8	6041-00-08
10	6041-00-10
12	6041-00-12
15	6041-00-15
18	6041-00-18
22	6041-00-22
28	6041-00-28
35	6041-00-35
42	6041-00-42

Straight coupling (pipe-pipe)

S-Series



Pipe	Item no.
6	6541-00-06
8	6541-00-08
10	6541-00-10
12	6541-00-12
14	6541-00-14
16	6541-00-16
20	6541-00-20
25	6541-00-25
30	6541-00-30
38	6541-00-38

TAON

Hydraulik Komponenter

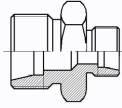
TAON Hydraulic Components ApS are specialists in hydraulic solutions, components and tool.

TAON Hydraulic Components ApS • +45 24 48 84 80 • info@taon.dk • www.taon.dk

© TAON Hydraulic will always help you find the best solution.

Straight reducing coupling (pipe-pipe)

L-Series



Pipe	Pipe	Item no.
8	6	6105-08-06
12	8	6105-12-08
15	10	6105-15-10
15	12	6105-15-12
18	12	6105-18-12
18	15	6105-18-15
22	15	6105-22-15
22	18	6105-22-18
28	18	6105-28-18
28	22	6105-28-22
35	22	6105-35-22
35	28	6105-35-28

Straight reducing coupling (pipe-pipe)

S-Series



Pipe	Pipe	Item no.
8	6	6605-08-06
10	6	6605-10-06
10	8	6605-10-08
12	10	6605-12-10
12	6	6605-12-06
12	8	6605-12-08
14	10	6605-14-10
14	12	6605-14-12
16	12	6605-16-12
16	14	6605-16-14
20	12	6605-20-12
20	16	6605-20-16
25	16	6605-25-16
25	20	6605-25-20
30	20	6605-30-20
30	25	6605-30-25
38	30	6605-38-30

TAON

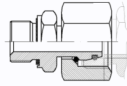
Hydraulik Komponenter

TAON Hydraulic Components ApS are specialists in hydraulic solutions, components and tool.

TAON Hydraulic Components ApS • +45 24 48 84 80 • info@taon.dk • www.taon.dk

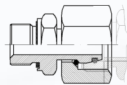
© TAON Hydraulic will always help you find the best solution.

**Straight stud standpipe adpt. w/captive seal
o´ring BSP cyl (pipe-BSP) - L-Series**



Pipe	Thread	Item no.
8	1/4" BSP	6090-08-04
10	1/4" BSP	6090-10-04
12	3/8" BSP	6090-12-06
15	1/2" BSP	6090-15-08
18	1/2" BSP	6090-18-08
22	3/4" BSP	6090-22-12
28	1" BSP	6090-28-16
35	1 1/4" BSP	6090-35-20
42	1 1/2" BSP	6090-42-24

**Straight stud standpipe adpt. w/captive seal
o´ring BSP cyl (pipe-BSP) - S-Series**



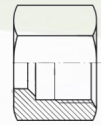
Pipe	Thread	Item no.
6	1/4" BSP	6590-06-04
8	1/4" BSP	6590-08-04
10	3/8" BSP	6590-10-06
12	3/8" BSP	6590-12-06
14	1/2" BSP	6590-14-08
16	1/2" BSP	6590-16-08
20	3/4" BSP	6590-20-12
25	1" BSP	6590-25-16
30	1 1/4" BSP	6590-30-20
38	1 1/2" BSP	6590-38-24

Cutting rings - L-Series (pipe fittings)



Pipe	Item no.
6	6149-00-06
8	6149-00-08
10	6149-00-10
12	6149-00-12
15	6149-00-15
18	6149-00-18
22	6149-00-22
28	6149-00-28
35	6149-00-35
42	6149-00-42

Nuts - L-Series (pipe fittings)



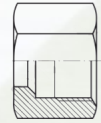
Pipe	Thread	Item no.
6	M12x1,5	6150-00-06
8	M14x1,5	6150-00-08
10	M16x1,5	6150-00-10
12	M18x1,5	6150-00-12
15	M22x1,5	6150-00-15
18	M26x1,5	6150-00-18
22	M30x2	6150-00-22
28	M36x2	6150-00-28
35	M45x2	6150-00-35
42	M52x2	6150-00-42

Cutting rings - S-Series (pipe fittings)



Pipe	Item no.
6	6649-00-06
8	6649-00-08
10	6649-00-10
12	6649-00-12
14	6649-00-14
16	6649-00-16
20	6649-00-20
25	6649-00-25
30	6649-00-30
38	6649-00-38

Nuts - S-Series (pipe fittings)



Pipe	Thread	Item no.
6	M14x1,5	6650-00-06
8	M16x1,5	6650-00-08
10	M18x1,5	6650-00-10
12	M20x1,5	6650-00-12
14	M22x1,5	6650-00-14
16	M24x1,5	6650-00-16
20	M30x2	6650-00-20
25	M36x2	6650-00-25
30	M45x2	6650-00-30
38	M52x2	6650-00-38

TAON

Hydraulik Komponenter

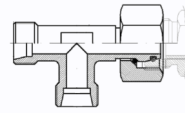
TAON Hydraulic Components ApS are specialists in hydraulic solutions, components and tool.

TAON Hydraulic Components ApS • +45 24 48 84 80 • info@taon.dk • www.taon.dk

© TAON Hydraulic will always help you find the best solution.

Adjustable stud barrel

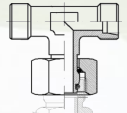
L-Series



Pipe	Thread	Item no.
6	M12x1,5	6071-06-07
8	M14x1,5	6071-08-09
10	M16x1,5	6071-10-11
12	M18x1,5	6071-12-13
15	M22x1,5	6071-15-16
18	M26x1,5	6071-18-19
22	M30x2	6071-22-23
28	M36x2	6071-28-19
35	M45x2	6071-35-36
42	M52x2	6071-42-43

Adjustable stud branch TEES

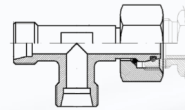
L-Series



Pipe	Item no.
6	6061-06-07
8	6061-08-09
10	6061-10-11
12	6061-12-13
15	6061-15-16
18	6061-18-19
22	6061-22-23
28	6061-28-29
35	6061-35-36
42	6061-42-43

Adjustable stud barrel

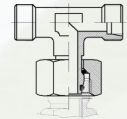
S-Series



Pipe	Thread	Item no.
6	M14x1,5	6571-06-07
8	M16x1,5	6571-08-09
10	M18x1,5	6571-10-11
12	M20x1,5	6571-12-13
14	M22x1,5	6571-14-15
16	M24x1,5	6571-16-17
20	M30x2	6571-20-21
25	M36x2	6571-25-26
30	M45x2	6571-30-31
38	M52x2	6571-38-39

Adjustable stud branch TEES

S-Series



Pipe	Item no.
6	6561-06-07
8	6561-08-09
10	6561-10-11
12	6561-12-13
14	6561-15-16
16	6561-18-19
20	6561-22-23
25	6561-28-29
30	6561-35-36
38	6561-42-43

TAON

Hydraulik Komponenter

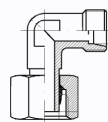
TAON Hydraulic Components ApS are specialists in hydraulic solutions, components and tool.

TAON Hydraulic Components ApS • +45 24 48 84 80 • info@taon.dk • www.taon.dk

© TAON Hydraulic will always help you find the best solution.

Adjustable stud elbows

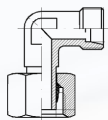
L-Series



Pipe	Thread	Item no.
6	M12x1,5	6051-06-07
8	M14x1,5	6051-08-09
10	M16x1,5	6051-10-11
12	M18x1,5	6051-12-13
15	M22x1,5	6051-15-16
18	M26x1,5	6051-18-19
22	M30x2	6051-22-23
28	M36x2	6051-28-29
35	M45x2	6051-35-36
42	M52x2	6051-42-43

Adjustable stud elbows with

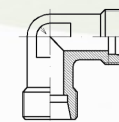
S-Series



Pipe	Thread	Item no.
6	M14x1,5	6551-06-07
8	M16x1,5	6551-08-09
10	M18x1,5	6551-10-11
12	M20x1,5	6551-12-13
14	M22x1,5	6551-14-15
16	M24x1,5	6551-16-17
20	M30x2	6551-20-21
25	M36x2	6551-25-26
30	M42x2	6551-30-31

Equal elbow couplings (pipe-pipe)

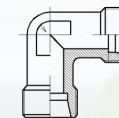
L-Series



Pipe	Item no.
6	6042-00-06
8	6042-00-08
10	6042-00-10
12	6042-00-12
15	6042-00-15
18	6042-00-18
22	6042-00-22
28	6042-00-28
35	6042-00-35
42	6042-00-42

Equal elbow couplings (pipe-pipe)

S-Series



Pipe	Item no.
6	6542-00-06
8	6542-00-08
10	6542-00-10
12	6542-00-12
14	6542-00-14
16	6542-00-16
20	6542-00-20
25	6542-00-25
30	6542-00-30
38	6542-00-38

TAON

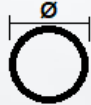



Hydraulik Komponenter

TAON Hydraulic Components ApS are specialists in hydraulic solutions, components and tool.

TAON Hydraulic Components ApS • +45 24 48 84 80 • info@taon.dk • www.taon.dk

© TAON Hydraulic will always help you find the best solution.

Hydraulic tube

Ø tube	Dimension	Black tube	Max pressure (bar)	Chrom6 free	Max pressure (bar)	Stainless tube (bright annealed)	Max pressure (bar)
6	6 x 1.0	-	-	1902-06x1.0	444	1920-06x1.0	400
8	8 x 1.0	1900-08x1.0	333	1902-08x1.0	333	1920-08x1.0	310
8	8 x 1.5	1900-08x1.5	499	1902-08x1.5	499	-	-
10	10 x 1.0	1900-10x1.0	282	1902-10x1.0	282	1920-10x1.0	253
10	10 x 1.5	1900-10x1.5	423	1902-10x1.5	423	1920-10x1.5	365
10	10 x 2.0	1900-10x2.0	564	-	-	-	-
10	10 x 2.5	1900-10x2.5	-	-	-	-	-
12	12 x 1.5	1900-12x1.5	353	1902-12x1.5	353	1920-12x1.5	310
12	12 x 2.0	-	-	1902-12x2.0	470	1920-12x2.0	400
12	12 x 2.5	1900-12x2.5	-	-	-	-	-
14	14 x 2.0	1900-14x2.0	403	-	-	-	-
15	15 x 1.5	1900-15x1.5	282	1902-15x1.5	282	1920-15x1.5	253
15	15 x 2.0	-	-	1902-15x2.0	376	1920-15x2.0	329
16	16 x 1.5	-	-	-	-	1920-16x1.5	238
16	16 x 2.0	1900-16x2.0	353	1902-16x2.0	353	1920-16x2.0	310
16	16 x 2.5	-	-	1902-16x2.5	441	1920-16x2.5	-
18	18 x 1.5	1900-18x1.5	235	-	-	1920-18x1.5	214
18	18 x 2.0	1900-18x2.0	313	1902-18x2.0	313	1920-18x2.0	282
18	18 x 2.5	-	-	1902-18x2.5	-	-	-
							

Hydraulic tube

Ø tube	Dimension	Black tube	Max pressure (bar)	Chrom6 free	Max pressure (bar)	Stainless tube (bright annealed)	Max pressure (bar)
20	20 x 2.0	1900-20x2.0	282	1902-20x2.0	282	1920-20x2.0	253
20	20 x 2.5	-	-	1902-20x2.5	353	-	-
22	22 x 1.5	-	-	1902-22x1.5	192	-	-
22	22 x 2.0	-	-	1902-22x2.0	256	1920-22x2.0	-
22	22 x 2.5	-	-	1920-22x2.5	320	-	-
25	25 x 2.5	-	-	1920-25x2.5	282	1920-25x2.5	-
25	25 x 3.0	-	-	1902-25x3.0	-	1920-25x3.0	-
28	28 x 1.5	-	-	1902-28x1.5	151	-	-
28	28 x 2.0	-	-	1902-28x2.0	201	1920-28x2.0	-
28	28 x 2.5	-	-	1902-28x2.5	252	1920-28x2.5	-
							

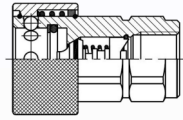
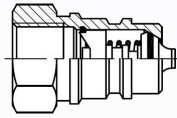
Black tube - material: E235+N, phosphated.

Chrom6 free - material: E235+N, galvanized 10-12 microns.

Stainless tube - material: 1.4571/TP316 Ti "CFA" (bright annealed)

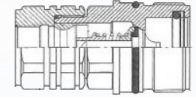
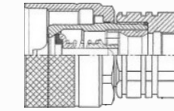
Quick couplings



Quick couplings ISO 7241-1A



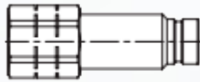
Thread (BSP)	Male (item no.)	Female (item no.)
1/4"	5550-02-04	5550-03-04
3/8"	5550-02-06	5550-03-06
1/2"	5550-02-08	5550-03-08
3/4"	5550-02-12	5550-03-12
1"	5550-02-16	5550-02-16
		

Screw type couplings ISO 14541



Thrasd (BSP)	Male (item no.)	Female (item no.)
1/4"	ISO14541M-1/4	ISO14541F-1/4
3/8"	ISO14541M-3/8	ISO14541F-3/8
1/2"	ISO14541M-1/2	ISO14541F-1/2
3/4"	ISO14541M-3/4	ISO14541F-3/4
1"	ISO14541M-1	ISO14541F-1
1 1/4"	ISO14541M-11/4	ISO14541F-11/4
		

Quick couplings - without blur ISO 16028



Thread (BSP)	Male (item no.)	Female (item no.)
1/4"	ISO16028M-1/4	ISO16028F-1/4
3/8"	ISO16028M-3/8	ISO16028F-3/8
1/2"	ISO16028M-1/2	ISO16028F-1/2
3/4"	ISO16028M-3/4	ISO16028F-3/4
		

Dust caps and plugs

Dust caps and plugs PVC - ISO7241-1A



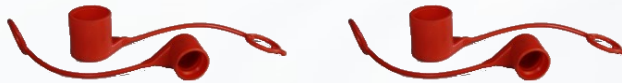
Thread	Male (Cap) Item no.	Female (Plug) Item no.
1/4"	5558-14-04	5558-15-04
3/8"	5558-14-06	5558-15-06
1/2"	5558-14-08	5558-15-08
3/4"	5558-14-12	5558-15-12
1"	5558-14-16	5558-15-16

Dust caps and plugs ALU - ISO 14541



Thread	Male (Cap) Item no.	Female (Plug) Item no.
3/8"	5558-38-06	5558-39-06
1/2"	5558-38-08	5558-39-08
3/4"	5558-38-12	5558-39-12
1"	5558-38-16	5558-39-16
1 1/4"	5558-38-20	5558-39-20

Dust caps and plugs PVC - ISO16028



Thread	Male (Cap) Item no.	Female (Plug) Item no.
1/4"	5552-44-04	5552-45-04
3/8"	5552-44-06	5552-45-06
1/2"	5552-44-08	5552-45-08
3/4"	5552-44-12	5552-45-12

Bonded seal

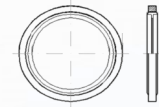
Bonded seal metal/rubber BSP



BSP	Item no.
1/4"	5601-01-04
3/8"	5601-01-06
1/2"	5601-01-08
3/4"	5601-01-12
1"	5601-01-16
1 1/4"	5601-01-20
1 1/2"	5601-01-24
2"	5601-01-32



Bonded seal metal/rubber Metric



Thread	Item no.
M8x1	5601-02-08
M12x1.5	5601-02-12
M14x1.5	5601-02-14
M16x1.5	5601-02-16
M18x1.5	5601-02-18
M20x1.5	5601-02-20
M22x1.5	5601-02-22
M24x1.5	5601-02-24
M26x1.5	5601-02-26
M30x2	5601-02-30

